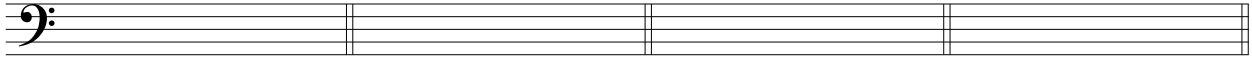
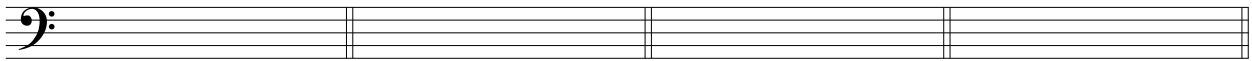


**HOMEWORK EXERCISES***Assignment 53—Writing Jazz Chords*

Given the following lead-sheet symbols, write the chords. Remember it is sometimes appropriate to enharmonically respell notes like  $C^b$ ,  $B^\sharp$ ,  $F^b$ ,  $E^\sharp$ , and altered notes like  $\#5$  and  $\#9$ .

1.  $A m_9^6$ 2.  $C^{7b9}_{\#5}$ 3.  $F m^{\Delta 9}$ 4.  $E^b_9 \text{ sus}$ 5.  $D_9^{6(\#11)}$ 6.  $B^b m^{9(b5)}$ 7.  $G^{\Delta 7(b5)}$ 8.  $A^b m^9$ 9.  $C^\sharp m^{\Delta 7}$ 10.  $F^\sharp \text{ add}^9$ 11.  $E^{13} \text{ sus}$ 12.  $D^b_7^{\#9}_{\#5}$ 13.  $B^9(13)$ 14.  $G^b_6$ 15.  $E^b_7^{\#11}_{\#9}$ 16.  $A^b^{\Delta 9(\#5)}$