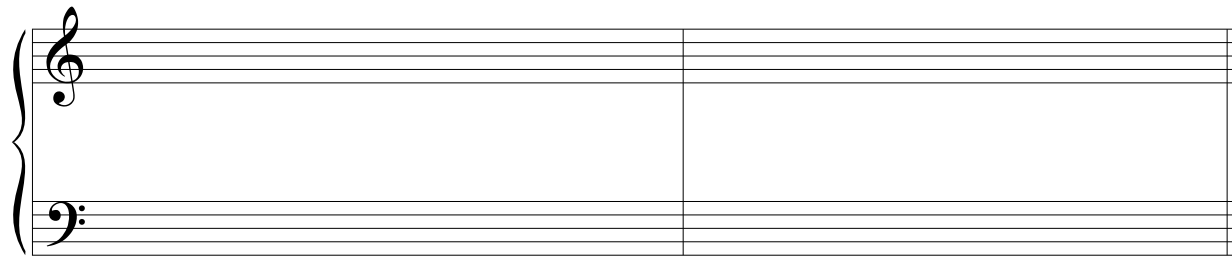


**HOMEWORK EXERCISES***Assignment 44—Voice Leading Secondary Chords*

Section 1. Voice lead the following Roman numeral progression. Include the key signature. Add the following non-chord tones: a 4-3 suspension, a passing tone, an anticipation, and a neighbor tone.

Notate your answer in a computer notation program and submit a printed score and audio.



D: I     $V_2^4/IV$      $IV^6$      $vii^{o7}/V$     V     $vii^{o7}/vi$     vi

Section 2. Analyze the figured bass to provide Roman numerals in the blanks below the staff, then voice lead the progression. Include the key signature.

$b\flat$ :    \_\_\_\_\_    \_\_\_\_\_    \_\_\_\_\_    \_\_\_\_\_    \_\_\_\_\_    \_\_\_\_\_

(continued on next page)

Section 3. Analyze the figured bass to provide Roman numerals in the blanks below the staff, then voice lead the progression. Include the key signature. Add three 4-3 suspensions and one neighbor tone.

The musical staff shows a bass line with the following notes and figured bass notation below them:

- Measure 1: G (no figure)
- Measure 2: A (figure 7#)
- Measure 3: B (figure b7#)
- Measure 4: C (no figure)
- Measure 5: D (no figure)
- Measure 6: E (figure 4/3)
- Measure 7: F (no figure)
- Measure 8: G (no figure)

G: \_\_\_\_\_