

HOMEWORK EXERCISES*Assignment 43—Voice Leading with Non-Chord Tones*

Section 1. Add the specified non-chord tones to the example on the blank staff below. Analyze suspensions with interval numbers. Analyze the harmonies with Roman numerals.

Bb: _____

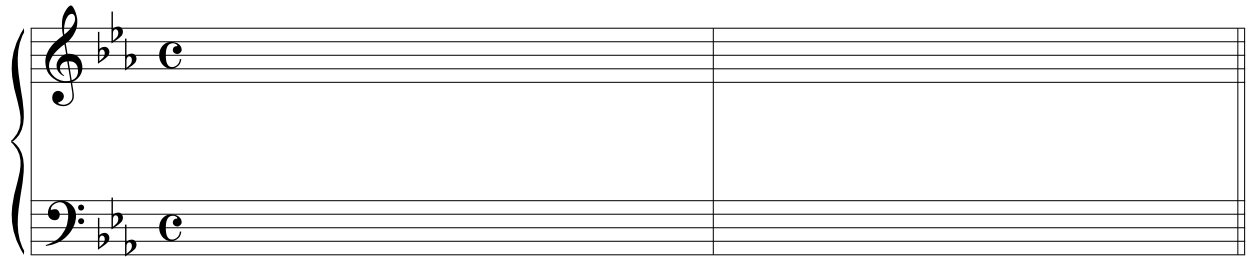
Section 2. Analyze the figured bass to provide Roman numerals then voice lead the progression in chorale style. Add the following non-chord tones: (1) double neighbor on beat 1, (2) 7-6 suspension on beat 2, (3) 7-6 suspension on beat 3, (4) neighbor tone on beat 4, (5) double neighbor on beat 5, and (6) 4-3 suspension on beat 6.

d: _____

NAME _____

Section 3. Voice lead the following Roman numeral progression in chorale style, then add the following non-chord tones: (1) double neighbor on beat 1, (2) 4-3 suspension on beat 2, (3) neighbor tone on beat 3, (4) 9-8 suspension on beat 4, (5) 4-3 suspension on beat 5, and (6) 9-8 suspension on beat 7.

Notate your answer in a computer notation program and submit a printed score and audio.



E♭: I V I⁶ IV V vi